

# **WaterSMART GRANT APPLICATION:**

**Cimarron Watershed  
Bostwick Park Water Conservancy District  
Watershed Management Program  
Phase I Grant FY2019  
FOA: BOR-DO-19-F010**

**Montrose, COLORADO**



**APPLICANT: Allen Distel, President  
Bostwick Park Water Conservancy District  
400 South 3rd.  
Montrose, Colorado 81401**

**Phone: (970)-249-8707  
Email: [bostwickpark@qwestoffice.net](mailto:bostwickpark@qwestoffice.net)  
SAM #: 6SSG7**

## Table of Contents

Acronyms.....	i
1 Technical Proposal and Evaluation Criteria .....	1
1.1 Executive Summary.....	1
1.2 Background .....	2
1.2.1 Cimarron River Watershed .....	2
1.2.2 Location Maps .....	5
1.3 Technical Project Description .....	7
1.4 Evaluation Criteria .....	8
1.4.1 Criterion A: Watershed Group Diversity and Geographic Scope .....	8
1.4.2 Criterion B: Addressing Critical Watershed Needs .....	10
1.4.3 Criterion C: Implementation and Results .....	14
1.4.4 Criterion D: Nexus to Department of the Interior Initiatives .....	15
2 Environmental and Cultural Resources Compliance .....	16
3 Required Permits and Approvals .....	16
4 Project Budget .....	17
4.1 Budget Proposal.....	17
4.2 Budget Narrative .....	17
5 Letters of Support .....	19
6 Official Resolution .....	19
7 Appendix-Attachments.....	20
7.1 Letters of Support .....	A
7.2 Board Resolution .....	B
7.3 Water Rights Compilation .....	C

## Acronyms

Name	Acronym
Acre feet	AF or Ac-Ft
Bostwick Park Water Conservancy District	District
Cimarron Canal & Reservoir Company	Company
Cubic feet per second	CFS or cfs
Colorado Division of Water Resources	CDWR
Funding Opportunity Announcement	FOA
National Environmental Policy Act	NEPA
Operation and Maintenance	O&M
United States Bureau of Reclamation	Reclamation
Western Colorado Area Office	WCAO

# 1 Technical Proposal and Evaluation Criteria

## 1.1 Executive Summary

Date:	November 2019
Applicant Name:	Bostwick Park Water Conservancy District
City:	Montrose
County:	Montrose
State:	Colorado
Estimated Project Start:	October 2020
Project Length:	24 Months
Estimated Project Completion:	October 2022
Federal Facility:	Includes a Reclamation Facility
Amount Requested:	\$ 100,000

Project Summary: The Project Sponsors, comprised of the Bostwick Park Water Conservancy District (District) and Cimarron Canal and Reservoir Company (Company) are seeking a WaterSmart Grant for Phase I watershed group development and restoration planning. The District and Company desire to form a new grassroots Watershed Group for the Cimarron River watershed in West-Central Colorado. It is anticipated that the Watershed Group (Group) will be comprised of a diverse group of stakeholders in the Cimarron Watershed including but not limited to Federal, State, County, municipal, environmental, and private entities. The District and Company's goal is to bring these stakeholders together to address water supply and water quality issues specific to the Cimarron River watershed. If successful, grant funding may be used for:

- Task A – Watershed Group Development
  - Hiring a watershed group coordinator and facilitator for organizational and outreach purposes
  - Conduct outreach activities
  - Gather data regarding water quality and quantity issues
  - Conducting pre-planning activities
  - Engineering and planning consultants
- Task B – Watershed Restoration Planning
  - Map development, technical analyses, data gathering
  - Idea gathering and goal setting
  - Review of Best Management Practices
  - Develop watershed restoration plan, identifying and prioritizing watershed management projects.



## **1.2 Background Data**

### **1.2.1 Cimarron Watershed**

The Cimarron Watershed is located in west central Colorado. It runs generally south to north for about 30 miles and is about 10 miles in width. Over this 30 mile length elevation ranges from over 13,000 feet in the San Juan Mountains to 6,770 feet as it discharges into the Gunnison River in the Black Canyon of the Gunnison. The major water source in the watershed is snowmelt runoff, but this is augmented throughout the year with rainfall and springs.

There are over 250 Water Rights identifying the Cimarron River as their source. The purpose of these rights includes but is not limited to instream flow rights, domestic, Federal Reserved rights, storage, and irrigation. Their adjudication dates range from 1904 to 2013. A sample compilation of these water rights can be found in Appendix C.

The major storage facility in the watershed is Silver Jack Reservoir. The District contracts with the Bureau of Reclamation for the storage water in Silver Jack Reservoir. The District then contracts with the Company to convey this storage water through the Cimarron Canal. The District and the Company share the cost of maintenance and repair of all District and Company works in the ratio of 65% and 35% respectively. A portion, (13.4% or 1,500 ac-ft whichever is less) of Silver Jack Reservoir storage is dedicated for release or storage for recreation and or fish and wildlife purposes.

The Cimarron Canal begins approximately three miles downstream of Silver Jack Reservoir, storage vessel for Reclamation's Bostwick Park Project, at the diversion structure on the Cimarron River. The canal has a decreed capacity of 185 cubic feet per second (cfs) and traverses approximately 23 miles where it discharges into the Hairpin and Vernal Mesa ditches which begin at Cerro Summit and are located in an adjoining watershed. The Vernal Mesa Ditch serves the Bostwick Park Project area to the northwest. The Hairpin Ditch serves the Shinn Park and Kinikin Heights areas to the south. Other laterals and ditches subsequently originate from the Vernal Mesa and Hairpin Ditches to distribute water to the irrigated lands.

A small flow is also diverted into the Cerro Reservoir by the City of Montrose on top of Cerro Summit. The City of Montrose owns 80 of the 600 shares of the Cimarron Canal & Reservoir Co. for domestic and municipal water supply purposes. Only a minor amount of irrigation water is used in the 23-mile reach of the Cimarron Canal. The remainder is used outside of the basin.

## Water Issues

- Water Quantity

The District and Company hold the majority of the water rights for diversion from the Cimarron River. Much of this water is actually diverted and then carried outside of the basin for a variety of uses, including domestic and agricultural.

In times of drought or low water years this can cause shortfalls for junior water right holders within the watershed and fish and wildlife flows in the Cimarron River. A watershed management plan could help to identify other water quantity issues and possible alternatives.

- Water Quality

Water quality in the basin is generally good. Reclamation conducted water sampling above, within, and below Silver Jack Reservoir for some time, but that process has been discontinued. The District and Company believe all watershed stakeholders would be interested in water quality conditions going into the future.

- Environmental Interests

Recreational and Fish and Wildlife storage is allocated in Silver Jack Reservoir as mentioned above. At times this water is released to maintain instream flows in the Cimarron River. In addition, Cimarron River flows are a critical component for the Black Canyon of the Gunnison Federal Reserved water right and contribute to flows for endangered fish in the Colorado and Gunnison rivers. A watershed management plan could further identify other environmental interests, issues and alternatives.

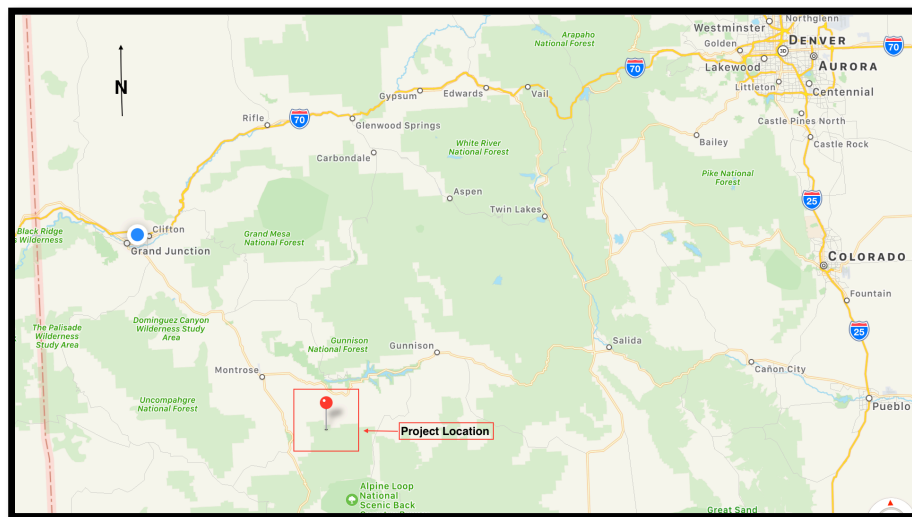
District and Company Combined Facility Inventory		
DESCRIPTION	QUANTITY/LENGTH	NOTES
Storage Dams	3	Fish Creek Numbers 1 & 2 and Silver Jack Reservoir
Diversion Dams	1	Cimarron Canal
Canals	23 Miles	Cimarron Canal
Laterals/Ditches	49 Miles	Hairpin, Vernal Mesa, and Bostwick Lateral
Drains	7.2 Miles	Open drain ditches constructed in 1973.
Siphons	1.1	Feeds Bostwick Lateral from East Vernal Mesa Ditch.
Large Parshall Flumes	2	Located at headgate and mid-point of Cimarron Canal
Turn-out structures with gates and flumes	Uncertain	Numerous water delivery structures to users.
Spill Boxes	15	Used to protect canal banks from overtopping during periods of high runoff.

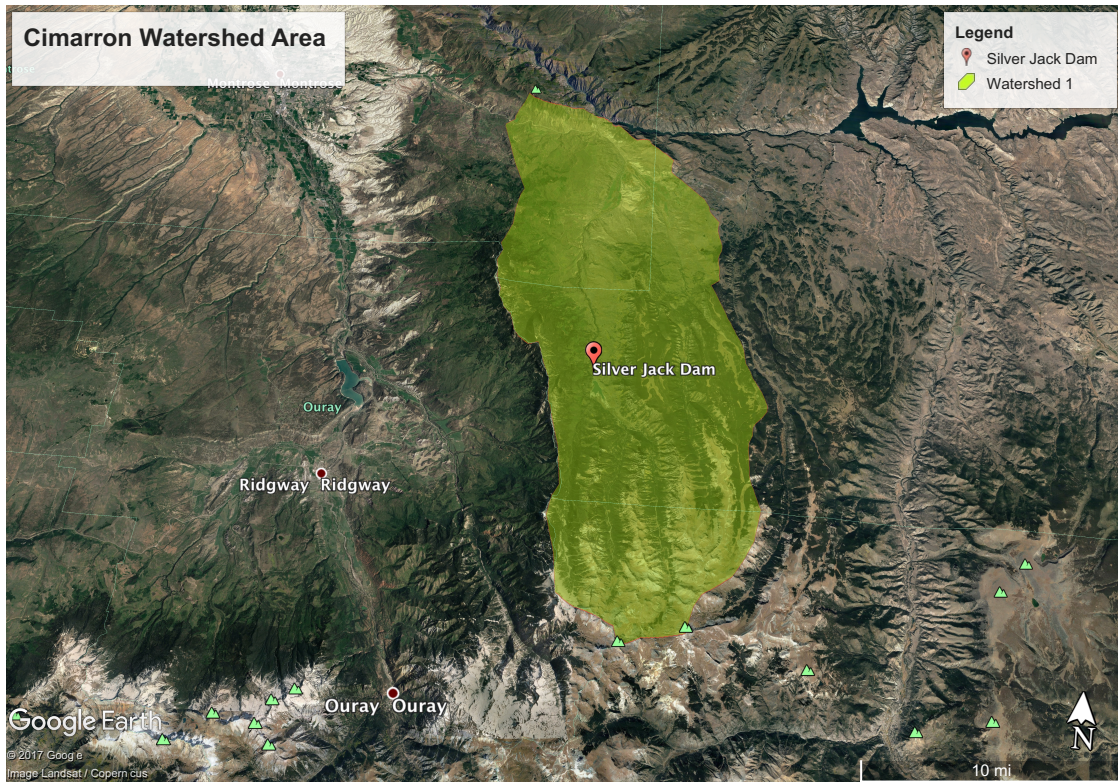
FACILITY OWNERSHIP			
DISTRICT – PROJECT WORKS		COMPANY WORKS	
Silver Jack Reservoir	13,500 acre-feet	Cimarron Canal including headgate and diversion dam.	Approximately 23 miles
Bostwick Lateral	1.771 miles Earthen ditches	Hairpin Ditch	7.468168 Miles
Bostwick Lateral Siphon	1.1 mile 24" concrete pipe	Kinikin Ditch	3.15351 Miles
Land Drains	6.1 miles rehab. 1.1 miles new	Waterdog Ditch	4.298551 Miles
		Shinn Park Ditch	3.346298 Miles
		Vernal Mesa Ditch	11.083 Miles
		East Vernal Mesa Ditch	4.21 Miles
		West Vernal Mesa Ditch	4.484 Miles

### 1.2.2 Relationship with Reclamation

Silver Jack Dam and Reservoir is the primary feature of the Cimarron Watershed and the Bostwick Park Project (Project). It is a Colorado River Storage Project (CRSP). The Project is managed jointly under Contract No. 14-06-400-4422 between Reclamation, Bostwick Park Water Conservancy District, and the Cimarron Canal and Reservoir Company, executed March 18, 1966. Since that time, the District and Company have continued to work with Reclamation to properly operate and maintain the Project.

## 1.3 Project Location





**Figure 1 Project Location Maps**

Cimarron River Watershed is a sub-basin of Watershed Unit HUC – 14020002. The Cimarron River Watershed covers portions of Montrose, Gunnison and Hinsdale Counties in West Central Colorado approximately 25 miles east and south of the town of Montrose, Colorado.

## **1.4 Technical Project Description**

**1.4.1 Applicant Category** – The District and Company are seeking funding as a New Watershed Group. A formal watershed group for the Cimarron River has not been organized in the past but the District and Company are working to do so now. To accomplish this, the District and Company have recently formed a core Group by contacting key stakeholders and holding its first meeting. The Group held their first meeting on October 21, 2019. Items of discussion included problem areas in the Watershed and possible projects. The District and Company have collaborated in the past to develop a water management plan for the Bostwick Park Project. This will provide information for the watershed planning process.

**1.4.2 Eligibility of Applicant** – As defined in Section C.1 of the FOA, the applicant is a special district, an irrigation district.

**1.4.2.1** *The District significantly affects the water quantity in the watershed as it stores and diverts a large portion of the Cimarron River especially during the summer and fall.*

**1.4.2.2** *The District has a perpetual contract with Reclamation for the operation and maintenance of Silver Jack Dam and Reservoir, the largest storage vessel in the watershed. As the largest water right holder in the watershed, the District feels that it's incumbent upon them to lead a planning effort for the purpose of sustaining the future quality and quantity of the water resources inside and outside of the basin.*

**1.4.2.3** *The watershed is located in Colorado. The District is the contracting entity for the Bostwick Park Project, a Participating Project of the Colorado Storage Project Act as authorized by Congress and approved September 2, 1964.*

### **1.4.3 Goals –**

The preliminary overall goal in forming this group is to better manage the water resources in the Cimarron River watershed in a comprehensive fashion. During preliminary meetings with watershed stakeholders it became evident that the goals of the group include efficient use and condition of water resources for irrigation, fisheries, and the environment. This can only be achieved through the cooperation and communication of a wide range of the stakeholders.

### **1.4.4 Approach –**

Task A – Form a watershed group. Develop communication and trust among the stakeholders in order to engage in a meaningful watershed planning process. This will be achieved by hiring a watershed group coordinator and facilitator for organizational and outreach purposes. The group facilitator will use other water meetings such as the Gunnison Basin Roundtable meetings to notify and invite interested parties to participate in the watershed group. Other outreach

activities will be undertaken such as emails and notifications in electronic newsletters, tours, and coffee shop discussions to generate interest and participation. Preplanning activities will be undertaken that further identify specific stakeholders and related water resource issues that need to be addressed.

Task B – Following formation of the group a process would be initiated that gathers information and identifies issues, sets goals and priorities, identifies measures for implementation and defines a plan of action. This will likely require the assistance of planning and engineering professionals. Technical and geospatial data would be gathered for map development and further technical analyses. Idea gathering, issue identification and goal setting would be undertaken. Best Management Practices would be identified and evaluated. Finally a watershed management plan would be developed that will identify and prioritize adopted measures for implementation.

## **1.5 Evaluation Criteria**

### **1.5.1 Criterion A: Watershed Group Diversity and Geographic Scope (30 pts)**

#### **1.5.1.1 *Sub-Criterion No. A1 - Watershed Group Diversity –***

The following is a diverse list of stakeholders that affect or are affected by the quality and quantity of the water within the watershed.

- Federal entities such as Reclamation, BLM, National Park Service, and Forest Service.
  - Reclamation owns Silver Jack Dam and Reservoir which the District operates.
  - The BLM and Park Service manage lands that receive water from the watershed.
- State entities such as the Division of Water Resources and Colorado Parks and Wildlife
  - Division of Water Resources oversee the water rights diverted from the Cimarron River
  - Colorado Parks and Wildlife manages fish and wildlife in the watershed.
- Private Ranching Enterprises and growers such as Butte Rock Ranches, Scrifney Ranches, Nick Gray, and Don Stevens all graze cattle and grow feed within the watershed.
- Irrigation Companies and the Water Conservation District divert water for irrigation.
- Montrose and Gunnison Counties maintain roadways with the watershed.
- Municipal Water Providers comprised of Project 7 which includes the City of Montrose utilize water from the watershed for municipal uses.



- Environmental Entities such as Trout Unlimited and Rocky Mountain Elk Foundation
- Other water right holders such as Youth With A Mission.

The District has conducted initial watershed planning meetings which was attended by Trout Unlimited, Forest Service and Colorado Parks and Wildlife (CPW) who have indicated their support and willingness to participate as a stakeholder in this endeavor. They are concerned about water quality, water quantity, and habitat loss.

The Cimarron Canal and Reservoir Company (which is the largest diverter of water out of the watershed) has promised its support and participation as a partner in this endeavor. The Company and District are party to the 1966 O&M Contract with Reclamation to operate and maintain the Bostwick Park Project. Essentially the Company manages the private non-project features including reservoirs, canals, and ditches needed for the Bostwick Park Project to function. The Company is concerned about water quality, water quantity and erosion.

The BLM and the Parks Service have expressed interest in reducing tailwater running down Red Rock Creek from Bostwick Park into the Gunnison River as this can potentially present water quality issues in the Black Canyon of the Gunnison and Gunnison gorge.

The District will reach out to potential stakeholders through water meetings, such as the Gunnison Basin Roundtable Meetings, email, or personal letters and contacts. Potential stakeholders will be contacted through personal contact and letters that will include a letter of intent to sign and return. The letter will include the benefits of participation for Phase I and Phase II of the watershed planning process, also the importance of keeping the watershed healthy and benefits of piping their deliver ditches. The District will also hold public meetings that will be promoted in the media for interested parties and individuals.

Assimilation of this watershed group through meetings will encourage collaboration in identifying water shortages for individual water right holders and environmental interests and hopefully develop potential solutions to address these shortages.



### **1.5.1.2 Sub-criterion No. A2 – Geographic Scope**

The Cimarron watershed is comprised of about 75 square miles in the Hydrologic Unit 14020002. The area is comprised of a widely diverse range of property owners and interests. The upper reaches of the watershed begin in the Uncompahgre National Forest including the Uncompahgre Wilderness Area. Lower reaches include area managed by the Bureau of Land Management and the National Park Service. In between is a myriad of private property owners, irrigated ranches and cropland and the U.S. Bureau of Reclamation. The District plans to include all interests in the planning and implementation process. Work in the upper reaches of the watershed will include habitat improvement and address water quantity. Work in the lower reaches of the watershed will include erosion control, water quality and quantity.

Trout Unlimited has indicated support of the watershed group. Their interest lies in maintaining stream fishery health from top to bottom of the watershed. T.U. has indicated their interest in reaching out to assist in contacting other potential stakeholders to join in the development of a watershed management plan.

The operation plan for Silver Jack Reservoir (located toward the upper reaches of the watershed) calls for minimum fish and wildlife releases during specific time periods. The operation plan also says that the CPW may ask for additional releases from the Fish and Wildlife pool if needed in the summer months. These releases benefit fish and wildlife and other downstream users through the entire watershed below the reservoir.

Since much of the water in the watershed is exported outside of the basin, these potential stakeholders have also been included. A comprehensive detailed map that includes these out-of-basin stakeholders and stakeholder “boundaries” will be developed as part of the planning process.

## **1.5.2 Criterion B – Addressing Critical Watershed Needs (35 pts)**

### **1.5.2.1 Sub-criterion No. B1 Critical Watershed Needs or Issues**

Through communication with a variety of potential stakeholders, its own experience, and preliminary stakeholder meetings, the District has identified a variety of issues that need to be addressed through the planning process. Preliminary Stakeholder Meetings identified the following specific areas and projects within the Watershed that are of most concern:

- Restoration of Fish Creek Reservoirs No. 1 & 2. Fish Creek Reservoir #2 is currently slated for some improvements but needs additional funding to replace outlet works. This project could offset diversions from the stream, releases from Silver Jack

Reservoir and could augment flows in Cimarron River and provide recreation benefits.

- Garnet Ditch Improvements. Lining or piping portions of the ditch to reduce losses to improve flows in West Fork of Cimarron creek. Could also incorporate a fish barrier as part of Colorado River Cutthroat reintroduction process.
- Continued installation of control structures on Cimarron Canal. Installing water diversion and control structures where the canal intercepts streams like Fish Creek would improve fish and wildlife habitat in the Cimarron basin and would improve operations on the canal system.
- Improvement of other recreation reservoirs such as Cowpuncher and Beaver Dam Lake.
- Installation of water temperature probes in the Big and Little Cimarron. Creating a relationship between flow and temperature can further help with water management decisions to protect cold-water fisheries.
- Restore Colorado River Cutthroat Trout to the Cimarron tributaries above Silver Jack Reservoir. Would be a large project that would include removal of non-natives in reservoir and streams.
- Infrastructure improvements on Cimarron canal and Bostwick Park laterals. Piping, lining, and improved monitoring of deliveries and demands to increase efficiency of the system to improve drought resiliency and conserve water or all water uses in the basin and downstream.
- Using the Cerro Summit reservoir as a reregulating reservoir for irrigation supplies on Bostwick Park. This project would reduce diversion demands at the Cimarron headgate and reduce spillage from the canal.
- Improving diversions structures in the Cimarron watershed including replacing push-up dams with permanent fish friendly structures.
- Implementation of a water conservation project where water users would be compensated for water conservation measures on a temporary and voluntary basis to improve river health, share water and address down basin demands.

**1.5.2.2 Sub-Criterion No. B2 Developing Strategies to Address Critical Watershed Needs or Issues.**

**Stakeholder Outreach and Partnership Building** – The District plans to reach out to all stakeholders affected by water from the Cimarron Watershed. To the District’s knowledge there has not been previous partnership building efforts in this watershed and formation of this group will be the foundation for establishing partnerships to protect and enhance this critical resource. The District and Company have initiated meetings with stakeholders to measure interest in forming a watershed group. Trout Unlimited, Colorado Parks and Wildlife and the Forest Service attended the meeting. These will be the key players moving forward.

As a large portion of the watershed contains public ground (Forest Service and BLM) it is highly likely that discussions regarding land use planning and designations governing public use and access will be undertaken. There are specific agreements in place between Reclamation and the Forest Service regarding land use and access that will be reviewed and included in the watershed planning.

The District has had meetings with Trout Unlimited to discuss fish habitat issues. If the future stakeholders see increased access as a watershed issue of importance it will be addressed through the planning process.

**Watershed Planning** – The District plans to use the planning process similar to that identified below:

- Build Partnerships by identifying and inviting key stakeholders and conducting public outreach. The District and Company have already initiated this process by conducting meetings with proposed stakeholders including Forest Service, Trout Unlimited and Colorado Parks and Wildlife.
  - The group identified initial issues of concern and conflicts. If successful the group will:
    - Conduct public meetings, tours, coffee shop discussions
    - Conduct additional stakeholder meetings
  - Set preliminary goals to address identified issues and conflicts
  - Identify watershed condition indicators
- Characterize the watershed. The District and Company have also included a consultant in preliminary meetings to help with the following specific tasks:
  - Identify federal and state regulations and guidelines
    - Clean Water Act requirements
    - Stormwater regulations
    - Endangered Species Act requirements
  - Gather existing data and create a watershed inventory

- Include data and analysis from federal and state resource agencies such as Reclamation, BLM, Fish and Wildlife Service, Natural Resources Conservation Service, and CPW
  - Develop Comprehensive GIS Map
  - Identify data gaps and collect additional data if needed
  - Analyze data
- Finalize Goals and Develop Alternatives
  - Set overall goals and management objectives
  - Develop indicator targets
  - Prioritize problem areas critical to achieving goals
  - Develop and prioritize management measures to achieve goals.
    - Utilize existing science and Best Management Practices (BMP) to develop management alternatives
  - Select Alternatives for Implementation
- Finalize Restoration/Management Plan

### 1.5.3 Evaluation Criterion C – Implementation and Results (25 pts)

#### 1.5.3.1 Sub-Criterion No. C1 Understanding of and Ability to Meet Program Requirements

The table below describes the plan for implementing the watershed management plan. The schedule and costs are estimated.

Item Description	Milestone	Start Date (Month)	End Date (Month)	Cost
<b>Task A – Watershed Group Development</b>				
Hire Watershed Group Coordinator and Facilitator	Coordinator Hired	Oct. '20	Oct. '22	\$37,500
Stakeholder Outreach	Group Formed	Oct. '20	Jan. '21	\$2,200
Identify Scope of Plan	Scope Identified	Nov. '20	Feb. '21	\$2,200
Develop Bylaws, Mission Statement etc	Group Formalized	Nov. '20	Feb. '21	\$2,500
Identify Issues and Conflicts	Issues and Conflicts Identified	Dec. '20	May '21	\$3,000
Set Preliminary Goals – Outline Draft	Watershed Plan Outline Complete	May '21	Jun. '21	\$5,000
<b>Task B – Watershed Planning</b>				
Characterize Watershed – Gather Data, develop maps	Mapping Complete	Feb. '21	Feb. '22	\$32,500
Finalize Goals and Develop and Prioritize Alternatives	Alternatives Developed and Prioritized	Dec. '21	Jul. '22	\$2,000
Finalize Plan	Plan Complete	Jul. '22	Oct. '22	\$15,500

#### 1.5.3.2 Sub-Criterion No. C2 Building on Relevant Federal, State, or Regional Planning Efforts

The new Cimarron Watershed Group will utilize existing plans to assist in watershed plan development. The District and Company have conducted meetings with stakeholders (including State, Federal and local agencies) and identified issues and possible projects. See those identified in Section 1.5.1.2. In addition the District will utilize other completed planning efforts such as:

- The District's Water Management and Conservation Plan completed under the Field Services Program utilizing Reclamation's Guidebook for Water Conservation Plan Development. The District's water management plan will be a useful tool in developing the watershed plan.
- Multiple USGS and EPA Reports will be used to assess baseline and existing data. These reports include but are not limited to:
  - Water-Quality Data Analysis of the Upper Gunnison River Basin
  - USGS Colorado Water Quality Summary for the Upper Gunnison River Basin
  - Water Quality Data Analysis of the Upper Gunnison River Watershed, Colorado 1989-99
  - EPA Watershed Quality Assessment Report for Upper Gunnison Basin
  - Reclamation's Aspinall EIS

#### **1.5.4 Evaluation Criterion D – Nexus to Department of the Interior Initiatives (10 pts)**

- About half of the land within the watershed is owned and managed by the Federal Government. It is vital to the success of the planning process that representatives from Reclamation, Forest Service, BLM, and the Park Service participate as stakeholders in the planning process. Their input will be tirelessly sought through stakeholder meetings and planning reviews. Their nexus to the watershed is listed below:
  - The Cimarron River Watershed contains Silver Jack Reservoir, a Reclamation facility that is the storage vessel for the Bostwick Park Project. The reservoir is on the Cimarron River and its operation basically controls flows to the majority of the watershed. Water from the watershed serves the Bostwick Park Project for irrigation. The Company and District have contracted with Reclamation for the operation and maintenance of the Project including Silver Jack Dam.
  - The Cimarron River discharges into the Gunnison River above the Aspinall Unit's Crystal Dam, just upstream of the beginning of the Black Canyon of the Gunnison National Park. At times, discharge from the Cimarron constitutes the majority of the water flowing at this location and is critical to meeting the Federal Reserved Water Right for the Black Canyon of the Gunnison.
  - Immediately downstream of the Black Canyon of the Gunnison National Park is the BLM managed Gunnison Gorge National Conservation Area. Again, at times the major flow in this reach of the Gunnison River is comprised of discharge from the Cimarron River.

- Tailwater from the Bostwick Park Project flows down Red Rock Creek into the Gunnison River influencing water quality downstream including critical habitat for endangered fish located between Delta and Grand Junction, Colorado. Improvements to the watershed could improve water quality and positively impact endangered fish.

## **2 Environmental and Cultural Resources Compliance**

The District has contacted Reclamation's WCAO which has indicated that a Categorical Exclusion Checklist is likely appropriate for this type of planning project in this area. However, it is understood that NEPA cannot be prejudged and Reclamation is expected to participate as a stakeholder since it occupies a major role in the watershed. As the planning process unfolds, Reclamation will advise the group of any additional NEPA requirements. \$5,000 will be budgeted for possible NEPA and Cultural Resource activities.

## **3 Required Permits or Approvals**

No known permits or approvals are required at this time.

## 4 Project Budget

### 4.1 Budget Proposal

<b>Cimarron Watershed Plan Budget Item Description</b>	<b>\$/Unit</b>	<b>Quantity</b>	<b>Type</b>	<b>Total Cost</b>
<b>Salaries and Wages</b>				
Trey Denison – Field Manager	\$19	48	Hr	\$912
Allen Distel – Program Manager	\$35	48	Hr	\$1,680
Administrative Assistant	\$25	48	Hr	\$1,200
<b>Fringe Benefits</b>				
Full-Time Employees	\$11.00	48	Hr.	\$528
Part-Time Employees				
<b>Supplies and Materials</b>				
Mailings	\$100	6	ea	\$600
Office Supplies and Equipment	\$4000	1	lot	\$4,000
<b>Contractual</b>				
Facilitator/Coordinator	\$50	750	Hr	\$37,500
NEPA/Cultural Resource	\$5,000	1	job	\$5,000
Planning Consultant/ Report Writer	\$75	160	Hr	\$12,000
Sampling, Analysis & Lab Work	\$5,000	4	job	\$20,000
Room Rental for Meetings	\$500	6	ea	\$3,000
GIS Map Development	\$125	100	Hr	\$12,500
<b>Other Costs</b>				
Legal Review/Consultation	\$200	20	Hr	\$4,000
<b>Total Costs</b>				\$102,920

### 4.2 Budget Narrative

- Salaries and Wages – Trey Denison, Field Manager and Allen Distel, Board President are the key personnel coordinating the Watershed Planning effort. They will be responsible to attend meetings and assist the Facilitator/Coordinator in setting up meetings, providing guidance, entering into contracts with other contractors and other administrative activities. The Administrative Assistant will be responsible for the day-to-day tasks of administering the grant and contracts relative to the planning effort.
- Fringe Benefits – The above-mentioned employees earn fringe benefits as listed on the Budget Proposal Worksheet. These benefits include:



- Housing
- Retirement
- Workman compensation
- Health Insurance
- Supplies and Materials –
  - It is estimated that there will be about 6 mailings to invite prospective stakeholders to participate in the Watershed Planning effort. The costs for mailings include envelopes and postage.
  - A LED projector or other device may be needed as a tool in carrying out meetings. These cost \$600 - \$1,000.
  - Other materials may include but not be limited to white boards, markers, easels, paper, pens, folders, and other miscellaneous items necessary for conducting brainstorming sessions or printing reports, printing maps, handouts
- Contractual – The unit costs identified below were obtained through past experience in dealing with consultants.
  - It is anticipated that a Facilitator/Watershed Planning Coordinator will be hired to facilitate meetings and coordinate the planning process. It is estimated that this task will require 750 hours of work over a 2 year period at a cost of \$50 per hour.
  - Depending on the scope of the planning and monitoring/sampling effort some NEPA and/or Cultural resource inventory may be necessary. If needed, a NEPA and/or Cultural Resource consultant will be hired. To cover this possibility \$5,000 is budgeted to pay for these potential activities.
  - Planning Consultant/Report Writer – In order to produce a workable plan, a consultant capable of assimilating and analyzing data, assisting in identifying Best Management Practices, making recommendations, and writing all of this down will be necessary. This task could be combined with those of the Facilitator/Coordinator. A preliminary estimate for this task is 160 hours at \$75/hour for a total cost of \$12,000.
  - Sampling, Analysis, and Lab Work – The group may decide to sample water, air, soils, and other elements in order to gather information relative to watershed planning. If four sampling events are undertaken at a cost of \$5,000 each, the total sampling, lab work, and analysis summary would cost \$20,000.

- Room Rental for Meetings – Depending upon location and response to invitations it may be advantageous to rent a room at a public place. This cost may include amenities such as refreshments, phone, projector screens or other necessary items.
- GIS Map Development – In order to organize and present data, a Geographic Information System (GIS) should be developed as part of the planning effort. This would require the services of someone trained and capable of this activity. It is estimated that it would require 100 hours of GIS mapping time at \$125/hr totaling \$12,500 to produce a product to fill this need.
- Other Costs - Legal Consultation to review contracts, water rights, etc. 20 Hrs. @ \$200/Hr.

**5 Letters of Support** - The District has received letters of support from the following entities: Cimarron Canal Company, Colorado Division of Water Resources, Gunnison Basin Roundtable, Project 7, Tri-County Water Conservancy District, and Trout Unlimited. They can be found in the Appendix.

**6 Board Resolution** - If not completed prior to submission of this application, the District Board will submit an executed resolution within 30 days of application submittal.

## **7 APPENDIX - Attachments**

**7.1 Letters of Support**

**7.2 Board Resolution**

**7.3 Sample Water Rights List**

# **APPENDIX – Attachments**

## **Letters of Support**

## Cimarron Canal & Reservoir Company

400 South 3<sup>rd</sup> Street, Montrose, CO 81401

Phone: (970) 249-8707 Fax: (970) 252-7168

[cimarroncanal@gmail.com](mailto:cimarroncanal@gmail.com)

[www.bostwickcimarronwater.com](http://www.bostwickcimarronwater.com)

January 17, 2017

U.S. Bureau of Reclamation

Attn: Mr. Darren Olson

Mail Code: 84-27852

P.O. Box 25007

Denver, CO 80225

Dear Mr. Olson:

The Cimarron Canal & Reservoir Company (the largest exporter of water out of the Cimarron Basin) is pleased to support the Bostwick Park Water Conservancy District's efforts in forming a watershed group and initiating a watershed management plan through their application to Reclamation for a WaterSmart Watershed Planning Grant. Success in attaining this grant will allow the District to form a formal watershed group to establish dialogue, identify issues, set goals and priorities, and identify potential implementation measures to address issues related to the Cimarron Watershed.

We support this project and appreciate your consideration of this request.

Sincerely,



Allen Distel, President



**COLORADO**  
Division of Water Resources  
Department of Natural Resources

January 22, 2018

U.S. Bureau of Reclamation  
Attn: Mr. Darren Olson  
Mail Code: 84-27852  
P.O. Box 25007  
Denver, CO 80225

**RE: Letter of Support - Bostwick Park Water Conservancy District**

Dear Mr. Olson:

The Colorado Office of the State Engineer (SEO) is pleased to provide a letter of support for Bostwick Park Conservancy District's efforts in forming a watershed group and initiating a watershed management plan through their application to Reclamation for a WaterSmart Watershed Planning Grant. Success in attaining this grant will allow the District to form a formal watershed group to establish dialogue, identify issues, set goals and priorities, and identify potential implementation measures to address issues related to the Cimarron watershed.

As the administrative agent overseeing the diversion of water in Colorado, our support is based on our understanding that the project fulfills the State's objectives regarding solutions to water quality, while acknowledging the need to divert and use the State's water only in harmony with Colorado's system of water rights. We support this project and appreciate your consideration of this request.

Sincerely,

Bob W. Hurford, P.E.  
Division Engineer



January 27, 2018

US Bureau of Reclamation

Attn: Mr. Darren Olson

Mail Code: 84-27852

P.O. Box 25007

Denver, CO 80225

Dear Mr. Olson,

The Gunnison Basin Round Table is pleased to support the Bostwick Park Water Conservancy District's efforts in forming a watershed group and initiating a watershed management plan through their application to Reclamation for a WaterSmart Watershed Planning Grant. Success in attaining this grant will allow the District to form a formal watershed group to establish dialogue, identify issues, set goals and priorities, and identify potential implementation measures to address issues related to the Cimarron Watershed.

We support this project and appreciate your consideration of this request.

Sincerely,

Kathleen Curry, Chair

Gunnison Basin Round Table

54542 US Highway 50

Gunnison, CO 81230

[kathleencurry@montrose.net](mailto:kathleencurry@montrose.net)

970209-5537

## PROJECT 7 WATER AUTHORITY

January 25, 2018

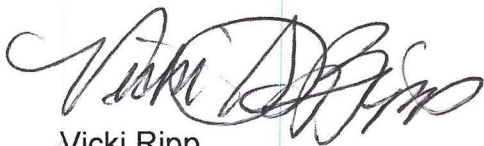
U.S. Bureau of Reclamation  
Attn: Mr. Darren Olson  
Mail Code: 84-27852  
P.O. Box 25007  
Denver, CO 80225

Dear Mr. Olson:

Project 7 Water Authority is pleased to support the Bostwick Park Water Conservancy District's efforts in forming a watershed group and initiating a watershed management plan through their application to Reclamation for a WaterSmart Watershed Planning Grant. Success in attaining this grant will allow the District to form a formal watershed group to establish dialogue, identify issues, set goals and priorities, and identify potential implementation measures to address issues related to the Cimarron Watershed.

We support this project and appreciate your consideration of this request.

Sincerely,



Vicki Ripp  
Chairperson



January 18, 2018

US Bureau of Reclamation  
Attention: Mr. Darren Olson  
Mail Code: 84-27852  
PO Box 25007  
Denver, Colorado 80225



Dear Mr. Olson:

The Tri-County Water Conservancy District is pleased to support the Bostwick Park Water Conservancy District's efforts in forming a watershed management plan through their application to Reclamation for a WaterSmart Watershed Planning Grant. Tri-County is a major stakeholder in the Uncompahgre Basin watershed which is potentially influenced by activities in the Cimarron Basin. We plan to participate in the formation and activities of this watershed group. We look forward to identifying issues and solving the problems and challenges in the Cimarron Basin watershed.

The Board at Tri-County voted unanimously to support this project and appreciate your consideration of Bostwick Park's grant application.

Sincerely,

A handwritten signature in black ink, appearing to read "MB", is placed above the printed name.

Mike Berry  
General Manager

cc: Mr. Allen Distel, Manager and President, Bostwick Park WCD



1/17/18

U.S. Bureau of Reclamation  
Attention: Mr. Darren Olson  
Mail Code: 84-27852  
P.O. Box 25007  
Denver, CO 80225

RE: WaterSMART Watershed Planning Grant – Bostwick Park Water Conservancy District

Dear Mr. Olson:

Please accept our enthusiastic letter of support for Bostwick Park Conservancy District's WaterSMART 2018 Grant Application for the Watershed Planning Grant. Trout Unlimited (TU) is pleased to support the District in their efforts to improve and modernize irrigation infrastructure through this and other efforts.

TU, alongside the 10,000 supporting members in Colorado and over 150,000 members nationwide, strive to protect, reconnect, restore and sustain coldwater fisheries like those found in the Cimarron River.

Over the past several years TU has been working with Bostwick Park Conservancy District to improve the efficiency of the project in an effort to restore stream flows on the Cimarron River. Through these efforts we've realized the need for comprehensive analysis of the watershed and the multitude of water demands within the watershed. Creation of a Watershed Group would allow Bostwick Park and other users including non-consumptive users to address how competing demands can best be met under varying and changing hydrologic regimes. Supporting this project will certainly yield benefits for the users who've historically relied on the watershed as well as new water demands.

In closing, we express our full support of this project and hope that the District's application receives thoughtful consideration.

Sincerely,

Cary Denison, Trout Unlimited  
Gunnison Basin Project Manager

# Board Resolution

## Consent of Directors

The directors of Bostwick Park Water Conservancy District, a Colorado corporation, consent to the following for the WaterSMART Cooperative Watershed Management Grant

Allen Distel is the official with legal authority to enter into an agreement

The board of directors reviewed and supports the application submitted

Bostwick Park Water Conservancy District will provide the amount of funding and/or in-kind contributions specified in the funding plan

Bostwick Park Water Conservancy District will work with Reclamation to meet established deadlines for entering into a grant or cooperative agreement

Dated: 11/7/19

By: Allen Distel

Allen Distel President

Director, Bostwick Park Water Conservancy District

Dated: 11/7/19

By: Tom Wise

Tom Wise Secretary

Director, Bostwick Park Water Conservancy District

# Water Rights

## Water Rights Report by Structure Name

State of Colorado

HydroBase

WD	ID	Water Right Name	Struct Type	Stream Information		Cty	Legal Location				Use Type	Decreed Amt	U	Adj. Type	Adj. Date	Padj Date	Apro Date	Admin No	O #	Priority No.	Court Case	Seq #	PIA	Alter ID	Comment	
				#	Name		Q10	Q40	Q160	sec ts																ls
62	830	ANGUS SPRINGS DITCH	1	412	Cimarron River	MON	SW	SE	NE	21	48	N 6 W N	1		1.2000	C	S	1972-12-31	1971-12-31	1887-06-01	44559.13666	0			W0461	THREE POINTS OF DIVERSION .02 CFS OF 1.2 FOR DOMESTIC
62	830	ANGUS SPRINGS DITCH	1	412	Cimarron River	MON	SW	SE	NE	21	48	N 6 W N	8		0	C	S	1972-12-31	1971-12-31	1887-06-01	44559.13666	0			W0461	THREE POINTS OF DIVERSION .02 CFS OF 1.2 FOR DOMESTIC
62	840	BAR E SPG PIPELINE	4	412	Cimarron River	MON	SE	NE	NE	20	48	N 6 W N	18		0.1100	C	S	1972-12-31	1971-12-31	1946-05-01	44559.35184	0			W0462	ONE OF THREE PTDV TO PRODUCE 50 GPM + .02 CFS OF DCR TO DOM
62	840	BAR E SPG PIPELINE	4	412	Cimarron River	MON	SE	NE	NE	20	48	N 6 W N	18		0.1100	C	S	1972-12-31	1971-12-31	1946-05-01	44559.35184	0			W0462	ONE OF THREE PTDV TO PRODUCE 50 GPM
62	840	BAR E SPG PIPELINE	4	412	Cimarron River	MON	SE	NE	NE	20	48	N 6 W N	18		0.1100	C	S	1972-12-31	1971-12-31	1946-05-01	44559.35184	0			W0462	ONE OF THREE PTDV TO PRODUCE 50 GPM
62	1439	BCR ELK SPRING	4	412	Cimarron River	GUN	SW	NW	NW	31	47	N 6 W N	9W		0.0220	C	S	2004-12-31	2003-12-31	2004-08-01	56461.00000	0			04CW0126	
62	3577	BCR LOWER POND	3	412	Cimarron River	GUN	NE	NW	NW	31	47	N 6 W N	79W		0.2500	A	S	2004-12-31	2003-12-31	2004-08-05	56465.00000	0			04CW0127	
62	3589	BCR MIDDLE POND	3	412	Cimarron River	GUN	SW	NE	NW	31	47	N 6 W N	79W		0.5000	A	S	2004-12-31	2003-12-31	2004-08-05	56465.00000	0			04CW0127	
62	1405	BCR NATURAL DRAW PUMP	8	412	Cimarron River	GUN	NW	NW	NW	31	47	N 6 W N	9W		0.0330	C	S	2004-12-31	2003-12-31	2004-08-01	56461.00000	0			04CW0125	
62	1405	BCR NATURAL DRAW PUMP	8	412	Cimarron River	GUN	NW	NW	NW	31	47	N 6 W N	1		0.0330	C	S,C	2004-12-31	2003-12-31	2004-08-01	56461.00000	0			04CW0125	TO IRRIGATE 5A
62	1405	BCR NATURAL DRAW PUMP	8	412	Cimarron River	GUN	NW	NW	NW	31	47	N 6 W N	1		0.0330	C	S,C,AB	2004-12-31	2003-12-31	2004-08-01	56461.00000	0			04CW0125	IRRIGATION USE ABANDONED BY COURT ORDER ON 3/10/2016.
62	1672	BIG HORN SPRING NO 3	4	412	Cimarron River	GUN	SW	SE	NW	32	47	N 6 W N	89		0.0330	C	S	1997-12-31	1996-12-31	1977-11-30	53691.46720	0			97CW0047	
62	847	BISHOP MESA SPG	4	412	Cimarron River	MON	SW	SW	SW	15	47	N 6 W N	689		1.0000	C	S	1977-12-31	1976-12-31	1880-12-31	46386.11323	0			W3015	SPG TRIB BIG CIMARRON-NOT MORE THAN 0.02 CFS USED FOR DOM
62	531	BLUE LAKE D NO 1	1	412	Cimarron River	GUN	NE	SW	SE	4	46	N 6 W N	1		3.0000	C	S	1960-03-30	1941-04-21	1932-06-15	33348.30116	0	360		CA6981	RAINBOW LAKE CR P601
62	531	BLUE LAKE D NO 1	1	412	Cimarron River	GUN	NE	SW	SE	4	46	N 6 W N	1		3.0000	C	S,AB	1960-03-30	1941-04-21	1932-06-15	33348.30116	0	360		84CW0093	RAINBOW LAKE CR P601
62	532	BLUE LAKE NO 2 DITCH	1	412	Cimarron River	GUN	SE	SE	SE	4	46	N 6 W N	1		1.5000	C	S,C	1960-03-30	1941-04-21	1954-08-10	38207.00000	0	432		CA6981	BLUE LAKE CR COND P716
62	532	BLUE LAKE NO 2 DITCH	1	412	Cimarron River	GUN	SE	SE	SE	4	46	N 6 W N	1		1.5000	C	S,CA	1960-03-30	1941-04-21	1954-08-10	38207.00000	0			W2544	TO COMBINE WITH P 432
62	532	BLUE LAKE NO 2 DITCH	1	412	Cimarron River	GUN	SE	SE	SE	4	46	N 6 W N	1		1.5000	C	S,AB	1960-03-30	1941-04-21	1954-08-10	38207.00000	0	432		84CW0093	BLUE LAKE CR P716
62	532	BLUE LAKE NO 2 DITCH	1	412	Cimarron River	GUN	SE	SE	SE	4	46	N 6 W N	18		1.5000	C	S	1960-03-30	1941-04-21	1954-08-10	38207.00000	0	432		CA6981	P716
62	532	BLUE LAKE NO 2 DITCH	1	412	Cimarron River	GUN	SE	SE	SE	4	46	N 6 W N	18		1.5000	C	S,AB	1960-03-30	1941-04-21	1954-08-10	38207.00000	0	432		01CW0282	2000 ABANDONMENT
62	535	BROWN DITCH	1	412	Cimarron River	MON	NW	NE	NW	28	48	N 6 W N	1		0.9200	C	O	1904-03-28		1893-05-30	15856.00000	0	76		CA1319	CA 3/28/1904 P71
62	535	BROWN DITCH	1	412	Cimarron River	MON	NW	NE	NW	28	48	N 6 W N	1		0.9200	C	O,T,F	1904-03-28		1893-05-30	15856.00000	0	76		03CW0168	TT SCHILDT-BROWN D ID 742
62	892	BUTTE DITCH	1	412	Cimarron River	MON	SE	SE	NW	15	47	N 6 W N	89		1.0000	C	S	1977-12-31	1976-12-31	1880-12-31	46386.11323	0			W3016	NOT MORE THAN 0.02 CFS USED FOR DOM
62	1878	BUTTE LAKE SPRING NO1	4	412	Cimarron River	MON	SW	NE	SE	15	47	N 6 W N	9W		0.0330	C	S	2008-12-31	2007-12-31	2006-08-19	57708.57209	0			08CW0155	FILLS BUTTE LAKE
62	1879	BUTTE LAKE SPRING NO2	4	412	Cimarron River	MON	NW	NE	SE	15	47	N 6 W N	9W		0.0270	C	S	2008-12-31	2007-12-31	2006-08-19	57708.57209	0			08CW0155	FILLS BUTTE LAKE
62	1880	BUTTE LAKE SPRING NO3	4	412	Cimarron River	MON	SW	NE	SE	15	47	N 6 W N	9W		0.0240	C	S	2008-12-31	2007-12-31	2006-08-19	57708.57209	0			08CW0155	FILLS BUTTE LAKE
62	928	C.R.L.C. SPG & PL NO 12	4	412	Cimarron River	GUN	NE	SW	SW	4	46	N 6 W N	8		0.0300	C	S,C	1972-12-31	1971-12-31	1972-11-20	44884.00000	0			W1491	
62	928	C.R.L.C. SPG & PL NO 12	4	412	Cimarron River	GUN	NE	SW	SW	4	46	N 6 W N	8		0.0300	C	S,CA	1972-12-31	1971-12-31	1972-11-20	44884.00000	0			80CW0195	REF CASE W-1491
62	556	CHARLEY BERRY D NO 1	1	412	Cimarron River	MON	SE	NW	NE	20	48	N 6 W N	1		0.5000	C	S	1960-03-30	1941-04-21	1950-07-10	36715.00000	0	397		CA6981	WASTE P663
62	558	CHARLEY BERRY D NO 3	1	412	Cimarron River	MON	SE	NW	SE	17	48	N 6 W N	1		0.5000	C	S	1960-03-30	1941-04-21	1947-07-10	35619.00000	0	383		CA6981	WASTE WATER P633
62	557	CHARLEY BERRY NO 2 D	1	412	Cimarron River	MON	NE	SW	SE	17	48	N 6 W N	1		1.0000	C	S	1960-03-30	1941-04-21	1941-07-10	33428.00000	0	371		CA6981	FR WASTE P623

Report Date: 2017-12-21

Page 1 of 9

HydroBase Refresh Date: 2017-10-16